



Contents lists available at ScienceDirect

# Quaternary Science Reviews

journal homepage: [www.elsevier.com/locate/quascirev](http://www.elsevier.com/locate/quascirev)

## Rapid Communication

# Was the Black Sea catastrophically flooded in the early Holocene?

Liviu Giosan<sup>a,\*</sup>, Florin Filip<sup>b</sup>, Stefan Constatinescu<sup>b</sup><sup>a</sup> Coastal Systems Group, Department of Geology and Geophysics, Woods Hole Oceanographic Institution, 360 Woods Hole Road, Woods Hole, MA 02543, USA<sup>b</sup> Department of Geography, University of Bucharest, N. Balcescu No.1, Bucharest, Romania

### ARTICLE INFO

#### Article history:

Received 2 August 2008

Received in revised form

10 October 2008

Accepted 14 October 2008

Available online xxx

### ABSTRACT

A catastrophic flooding of the Black Sea basin was proposed to have occurred during its reconnection to the ocean in the early Holocene. Possible cultural consequences of the flood include the migration of Neolithic farmers from around the Black Sea towards central Europe as well as the creation of flood myths. Stratigraphic and paleo-geomorphologic information from Danube delta aided by radiocarbon ages on articulated mollusks constrain the level in the Black Sea before the marine reconnection to ca 30 m below the present sea level rather than 80 m or lower. If the flood occurred at all, the sea level increase and the flooded area during the reconnection were significantly smaller than previously proposed.

© 2008 Elsevier Ltd. All rights reserved.

## 1. The last Black Sea reconnection to the ocean

From early ideas (Murray, 1900) to modern studies, after a century of research, there is still little consensus on the Black Sea level variations (e.g., Pirazzoli, 1991; Ryan, 2007; Hiscott et al., 2007). The Black Sea is a marginal basin that becomes marine only when the ocean level rises above the depth of the straits connecting it to the Mediterranean: the Bosphorus (current depth: ~35 m) and the Dardanelles (current depth: ~70 m). During the last global lowstand and for much of the subsequent deglacial ocean level rise, the Black Sea functioned as a giant lake with its level controlled by climate (e.g., Ross et al., 1970). Contrary to previous research envisioning a smooth reconnection to the ocean (e.g., Ross et al., 1970), Ryan and colleagues proposed that the Black Sea was instead catastrophically flooded and its level rose at least 50 m from around 90 m or lower below present sea level in a few years time (Ryan et al., 1997; Ryan and Pitman, 2000). The authors suggested that flooding of the vast continental shelf may have led to a migration of Neolithic farmers from around the Black Sea towards central Europe and led to the creation of flood myths. A protracted debate continues on the occurrence of the flood itself as well as on its possible cultural consequences (e.g., Aksu et al., 2002; Ryan et al., 2003; Hiscott et al., 2007; Ryan, 2007; Turney and Brown, 2007; Yanko-Hombach, 2007; Yanko-Hombach et al., 2007).

Faunal and geochemical reconstructions converge to indicate a rapid transition from a fresh to brackish lake to the ocean-connected modern Black Sea around 9400 years ago (~8400<sup>14</sup>CyearsBP; Ryan et al., 2003; Major et al., 2006; Hiscott

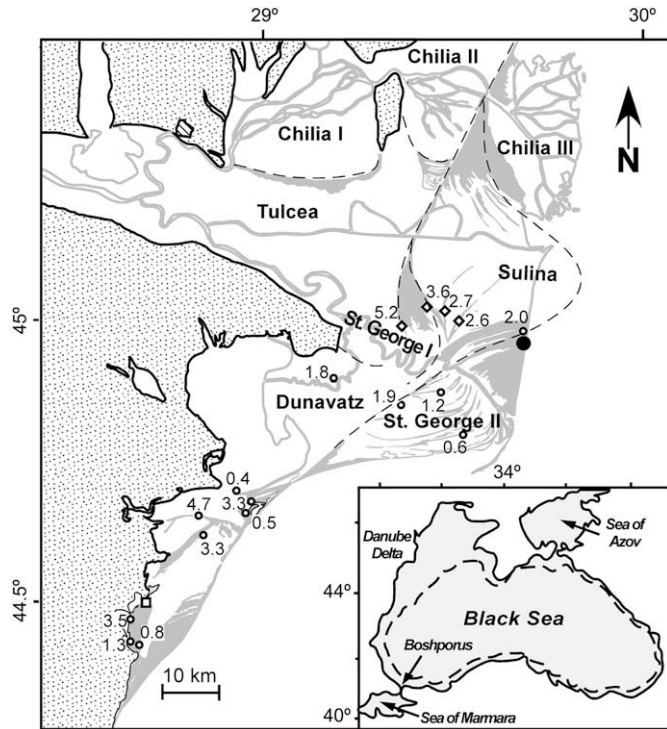
et al., 2007; Bahr et al., 2008), although a weak or transitory inflow of Mediterranean waters before that time is still discussed (e.g., Hiscott et al., 2007). Water level variations accompanying these changes remain, however, contentious. An agreement exists that a lake highstand at ~20–30 m below current sea level (mbsl) was reached sometime during the deglacial to the earliest Holocene, but the exact timing, cause, and temporal extent of this is disputed (e.g., Ryan et al., 2003; Hiscott et al., 2007; Lericolais et al., 2007a).

## 2. Constraints on the Black Sea level changes

Proponents of the flood hypothesis advanced a series of arguments in support of a lake level below the Bosphorus threshold immediately preceding the marine reconnection. At several locations on the Black Sea shelf, a pre-Younger Dryas lowstand (<13,250 <sup>14</sup>C years BP; Major, 2002) was found to be expressed as an unconformity at the top of desiccated clay-rich deposits with plant remains (e.g., Major, 2002; Ryan et al., 2003). A sandy coquina layer composed of lacustrine mollusks overlies lowstand deposits from just below 100 mbsl and was interpreted as a Younger Dryas transgressive lag (Major, 2002; Ryan et al., 2003). Supported by bulk carbonate ages of Dimitrov (1982) from the mid-shelf, Major (2002) suggested that the Younger Dryas coquina extended on the shelf shallower than 100 mbsl and was subaerially reworked during a post-Younger Dryas regression. The resulting shell hash was colonized from ~90 mbsl to higher than 40 mbsl by more salt-tolerant mollusk species after the reconnection (Major et al., 2006). At depths between 100 mbsl and 70 mbsl, drowned paleo-shoreline features and fields of bedforms, interpreted based on their morphometry as subaerial dune fields (Ryan et al., 2003; Ryan, 2007; Lericolais et al., 2007a,b), were also used to argue for

\* Corresponding author. Tel.: +1 508 289 2257.

E-mail address: [lgiosan@whoi.edu](mailto:lgiosan@whoi.edu) (L. Giosan).

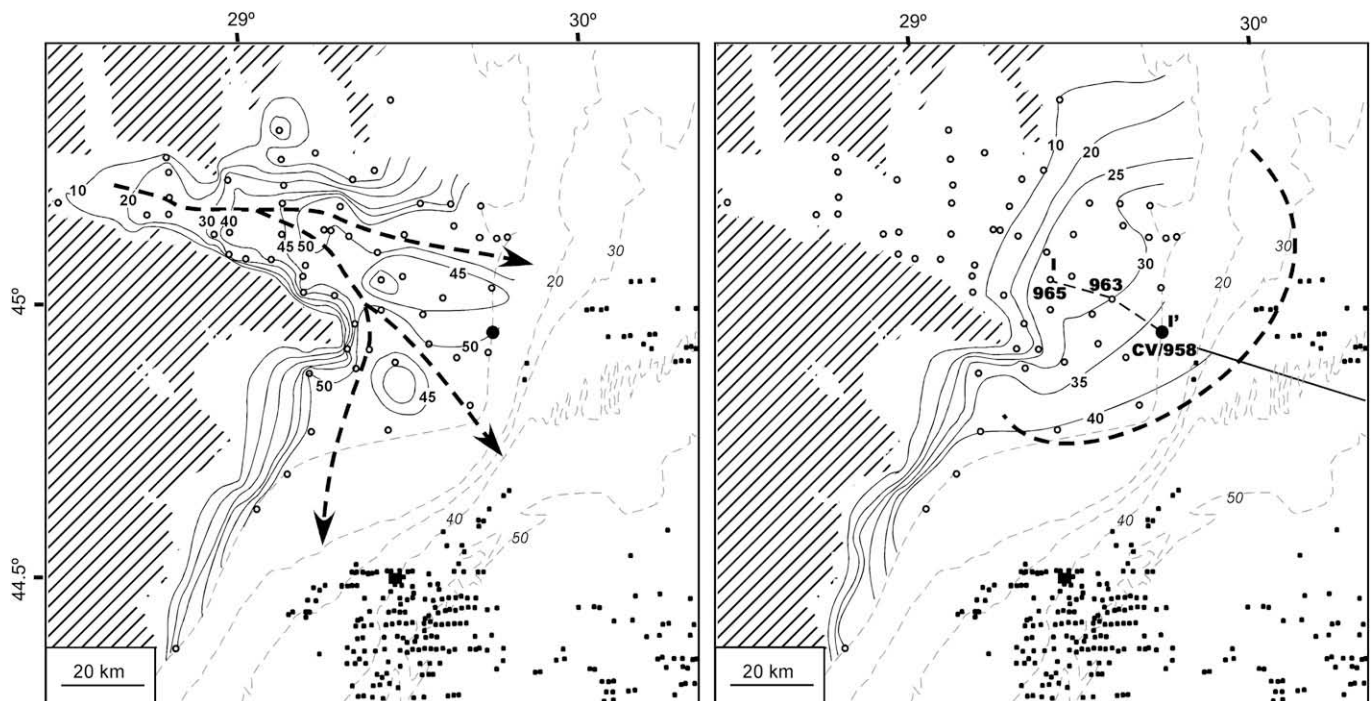


**Fig. 1.** Modern Danube delta morphology and lobe development sequence (after Giosan et al., 2006). Sand ridges are in grey and named lobes are delineated by dashed lines. The chronology is in cal. ka BP (diamonds – optically stimulated luminescence ages and calibrated radiocarbon ages; unfilled circles – calibrated radiocarbon ages). Location of the new drill core discussed in text is indicated by the black filled circle. Inset shows the Black Sea region with the location of Danube delta. The extent of the Black Sea shelf is approximated by the 100 m depth contour (dashed line).

a post-Younger Dryas regression, but these features are yet to be directly dated.

Supporters of the continuous transgression hypothesis argued that bedforms preserved on the Black Sea shelf in front of the Bosphorus represent barrier islands and associated lagoonal deposits that were drowned as the lake level rose over the outer and mid shelf (Aksu et al., 2002). Subsequent analysis showed that the bedforms were instead part of a “shelf fan” constructed by the dense, bottom-hugging inflow of Mediterranean waters spreading on the shelf from the Bosphorus outlet after the ocean reconnection (Ryan, 2007; Flood et al., in press) that may overlap older erosional relief (Giosan et al., 2005). However, in a core retrieved from 69 mbsl on the southwestern shelf of the Black Sea, sediments interpreted to have accumulated below the wave base (taken as  $\geq 30$  m water depth) span the postulated age of the flood covering the entire interval from before 9100 to after 8300  $^{14}\text{C}$  years BP (Hiscott et al., 2007). If we assume that the region around Sakarya River estuary in Turkey was vertically stable over the Holocene, the Black Sea level after the reconnection to the ocean was  $>18$  mbsl after 7500 BP, the youngest calibrated age for lacustrine sediments before estuarine sedimentation started at that location (Görür et al., 2001).

Ancillary support for a lacustrine highstand above the Bosphorus threshold comes from deltaic deposition in the Sea of Marmara from a proposed Black Sea water outflow between  $\sim 10,000$  and 9000  $^{14}\text{C}$  years BP (e.g., Hiscott et al., 2002), but it is highly contested with conflicting ages and different morpho-stratigraphic interpretations (e.g., Gökaşan et al., 2005; Eriş et al., 2007, 2008; cf., Hiscott et al., 2008). Other reconstructions have argued for an elevated lake level in the Black Sea, close to the modern depth of the Bosphorus, at the time of its reconnection to the ocean (e.g., Chepalyga, 1984; Balabanov, 2007; Yanko-Hombach et al., 2007); however, documentation on the indicative meaning of the stratigraphic or morphologic features used as sea level indicators, on the



**Fig. 2.** Left – Isobaths of fluvial gravels showing flow directions (arrowed thick dashed lines) for the Danube at lowstand. Right – Isobaths of the marine flooding surface. Thick dashed line delineates an early Holocene delta lobe. Seismic line of Lericolais et al. (2007c) is indicated by thin black line. The thin dashed line I-I' with numbered boreholes is discussed in Fig. 4. In both maps, uplands are hachured; current coastline and bathymetry are indicated by grey dashed lines; unfilled circles indicate location of boreholes; black dots indicate individual lowstand channels clustering into anastomosed networks (Popescu et al., 2004). Location of new drill core discussed in text is indicated by the black filled circle.

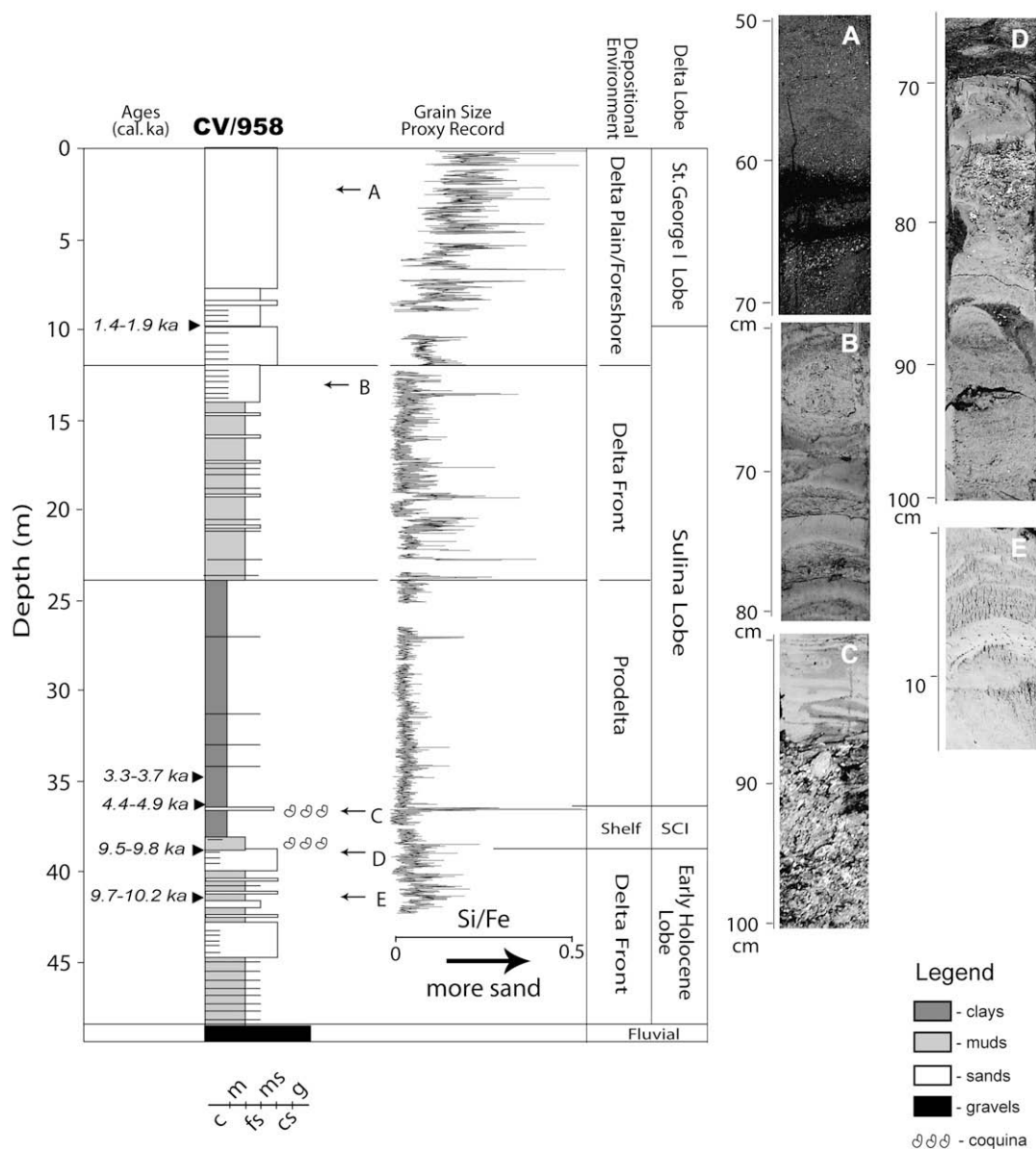
accuracy of their chronologies, as well as on possible tectonic influences is needed to establish the value of these reconstructions (Pirazzoli, 1991; Giosan, 2007).

### 3. A Danube delta perspective

The uncertainty surrounding the Black Sea level stems from a lack of reconstructions based on reliable sea level markers (Pirazzoli, 1991; Giosan et al., 2006), a scarcity of radiocarbon ages on *in situ* materials and the difficulty in calibrating radiocarbon ages in a setting with variable reservoir ages (Giosan, 2007; Ryan, 2007; Kwiecien et al., 2008). Compared to other coastal settings around the Black Sea, the Danube delta was vertically stable since at least the Last Interglacial (Dodonov et al., 2000; Giosan et al., 2006). A sea level reconstruction in the Danube delta shows that the Black Sea level was close to its modern level for the past five millennia

(Giosan et al., 2006). Whereas the evolution of the Danube delta since the middle Holocene is more or less known (Fig. 1), earlier deglacial to early Holocene deltaic–estuarine phases remain to be deciphered. Sedimentary deposits immediately underlying the modern delta down to the coarse gravelly fluvial base (Fig. 2a) had been postulated to be as old as early to middle Pleistocene (Liteanu et al., 1961; Liteanu and Pricajan, 1963) to early Holocene (Panin, 1972). Recently, Lericolais et al. (2007c) seismically imaged a clinoform above an erosional surface at 47 mbsl, in front of the present delta coast (Fig. 2; Minereau, 2006), and inferred it to have formed during a Bølling-Allerød lacustrine highstand.

Numerous Danube delta drill cores from the late 1950s (Fig. 2) were discussed in early papers (Liteanu et al., 1961; Grossu and Baltac, 1962; Liteanu and Pricajan, 1963; Baltac, 1963, 1964; Panin, 1972; Panin et al., 2007; Romanescu, 1996), but core material has not been preserved to allow further study. In 2007, we drilled a new



**Fig. 3.** Interpreted log data from CV core and, below 42 m, the co-located previous borehole (958). Ages are from radiocarbon ages on articulated mollusks in cal. ka BP. Lithology: c – clays; m – muds; fs – fine sands; ms – medium sands; cs – coarse sands; g – gravels. The ratio of Si/Fe (from XRF core scanning) is used as proxy for grain size (i.e., sand content and layers). Core photos at indicated positions show typical facies and contacts: A. shoreface sands with coffee grounds layers; B. delta front amalgamated sands and muds; C. prodelta clays overlying the upper coquina layer; D. muds and the lower coquina of the shelf condensed interval (SCI); E. delta front amalgamated sands and muds of the early Holocene lobe.

**Table 1**  
Radiocarbon dates on articulated mollusks from CV drill core.

No.	Unit	Depth (m)	Lab. No.	Material	<sup>14</sup> C age	Calibrated age (2 sigma)
1	St. George II lobe	9.25	OS-66832	<i>Abra</i> sp.	2130 ± 30	[1464 BP:1810 BP]
2	Sulina lobe	34.85	OS-64471	<i>Cardium edule</i>	3700 ± 35	[3357 BP:3960 BP]
3	Shelf condensed interval	36.00	OS-64470	<i>Paphia senescens</i>	4560 ± 30	[4491 BP:4832 BP]
4	Early Holocene lobe	38.80	OS-65796	<i>Dreissena polymorpha</i>	8660 ± 45	[9536 BP:9733 BP]
5	Early Holocene lobe	41.40	OS-64462	<i>Dreissena polymorpha</i>	8860 ± 45	[9745 BP:10171 BP]

core to 42 m depth near the present deltaic coast, onshore of the recently surveyed pre-modern clinoform. Facies analysis based on lithology, sedimentary structures and textures, and a high resolution geochemical grain size proxy record, were employed to identify depositional environments (Fig. 3). Radiocarbon ages on articulated mollusks (Table 1; Fig. 3) collected from sections with no drilling disturbance (i.e., intact stratification, preserved bedding contacts) provide age control. The dated mollusks were estimated to be *in situ* based on the lack of abrasion and secondary encrustations, non-exotic character (i.e., the lithological and facies characteristics of sediments that preserved them is in agreement with their known modern habitat; Nevesskaya, 1965; Bacescu et al., 1971), and sediment filling similar to the sediment surrounding the shells. We calibrated the radiocarbon ages using Calib 5.0.1 (Reimer et al., 2004); for marine mollusks we assumed a modern value for the reservoir age is  $440 \pm 40$  yr BP with  $\Delta R 75 \pm 60$  yr (Siani et al., 2000), whereas older ages on lacustrine mollusks were calibrated assuming a null reservoir age for the lacustrine surface waters after the Younger Dryas (Ryan, 2007; Kwiecien et al., 2008).

Beach ridge and shoreface sands of the St. George II lobe, younger than 2000 years, overlie amalgamated sand and muds of the delta front and prodelta clays; both facies accumulated as the Sulina lobe was constructed between  $\sim 3600$  and 2000 years ago (Figs. 3 and 4). Under these typically deltaic coarsening and shallowing upward deposits of the modern delta, lies a condensed interval composed of muds with two intercalated shell coquina beds (Figs. 3 and 4). The age of 4400–4900 years at the base of the upper coquina indicates that these sediments had been accumulating in a starved shelf setting during the development of first open-sea Danube delta lobe, the St. George I ( $\sim 5000$ –3600 years

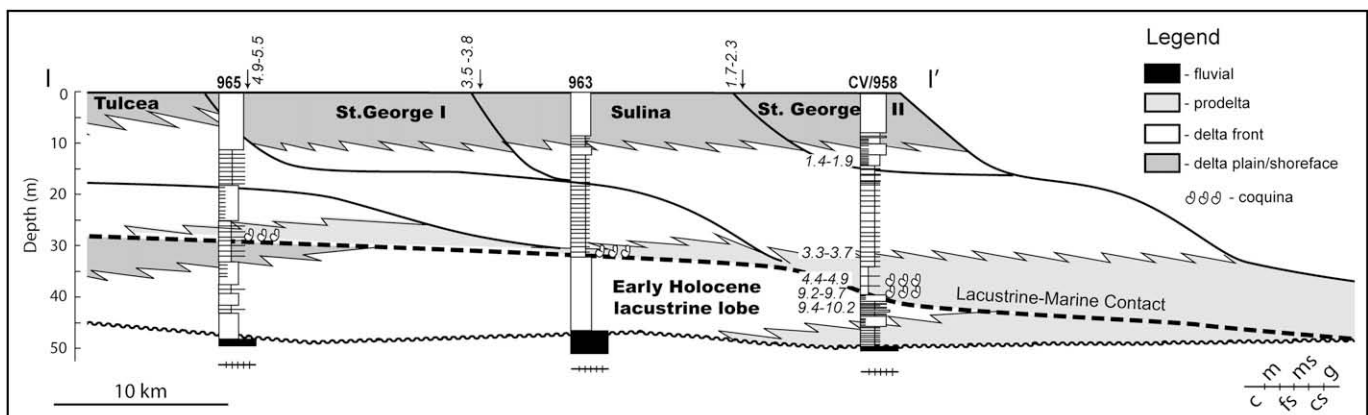
old). Below the lower coquina at  $\sim 39$  mbsl, amalgamated sands and muds typical of a delta front facies were deposited since at least 9700 until  $\sim 9500$  years ago ( $8860 \pm 45$  and  $8660 \pm 45$  <sup>14</sup>C years BP; Figs. 3 and 4), corresponding to the clinoform described by Lericolais et al. (2007c). Data from a previous borehole drilled at this location show that fluvial gravels underlie this deltaic unit below  $\sim 49$  mbsl (Fig. 3).

We used data from previously drilled cores to examine two surfaces below the modern Danube delta deposits. The first occurrence of gravels was used to plot the minimum depth of fluvial deposits (Fig. 2a). The reconstructed surface suggests that the Danube flowed at lowstand along two to three paleo-drainage directions, already recognized on the shelf as anastomosed channel networks (Popescu et al., 2004). The change in fauna from lacustrine to marine, aided by the change in facies from lacustrine delta front amalgamated sands and muds or coquina beds to estuarine/prodelta clayey deposits, was employed to reconstruct the lacustrine–marine separation surface (Fig. 2b). Although diachronous, this surface shows a vast lobe-like landscape of low relief, located between  $\sim 35$  and 25 mbsl, which was rapidly inundated during the marine transgression. Stratigraphic interpretation of a transect of cores (Fig. 3) on the alignment continuing the seismic line of Lericolais et al. (2007c), supported by radiocarbon ages from our new drill core and the shallow cores of Giosan et al. (2006), shows that the early Holocene Danube built a thin ramp delta similar to the modern Volga delta (Overeem et al., 2003). The reconstructed flat surface of the delta implies that the subaerial delta plain at the time was located around 30 mbsl (Fig. 2b). Networks of anastomosed channels (Popescu et al., 2004) suggest that earlier ramp deltaic lobes prograded farther onto the shelf.

#### 4. Was there a Black Sea flood?

In the early Holocene (9800–9500 years BP or 8660 <sup>14</sup>C years BP), immediately before the Black Sea reconnection to the ocean at  $\sim 9400$  years BP (8400 <sup>14</sup>C years BP), the Danube was building a ramp delta lobe that requires the contemporaneous level of the isolated Black Sea to be above 40 mbsl. Morphology of the lacustrine–marine contact and stratigraphic reconstructions indicate that the lake level at the time was around 30 mbsl.

The vertical range of values for modeled sea levels in the Sea of Marmara (Lambeck et al., 2007) and eustatic sea level curves (e.g., Fairbanks, 1989; Bard et al., 1990, 1996; Hanebuth et al., 2000; Yokoyama et al., 2000) cannot overrule a level higher than 30 mbsl at the Bosphorus, and thus, an abrupt rise of the Black Sea level,



**Fig. 4.** Longitudinal cross section of the Danube delta deposits based on borehole and shallow core chronostratigraphy (line I-I' in Fig. 2). Modern and earlier lobes are identified. Ages are in cal. ka BP. Arrows locate the approximate position of ages shallow cores projected onto line I-I'.

during the reconnection. However, if the reconnection was an abrupt event, the increase of the Black Sea level necessary to equalize its level to the contemporaneous ocean level was significantly smaller than the ~50 m previously proposed. Even a minor flooding of the Black Sea is expected to have left sedimentary imprints around the Black Sea (e.g., Siddall et al., 2004). For example, the drowning of the early Holocene Danube delta may be explained by a rapid increase of Black Sea level during the reconnection. The transgression leading to the early Holocene lake highstand may have been itself rapid (Ryan, 2007) to flood early deltas of the Danube on the outer and middle shelf (Popescu et al., 2004; Lericolais et al., 2007c).

## Acknowledgments

Funding came from WHOI Coastal Ocean Institute, NSF-OISE 0637108, and Romanian CEE X2C20/2006. Support in Romania was kindly provided by I. Armas (Romanian financial support), J. Hanganu (field support), D. Mihailescu (drilling) and G. Baboianu (drilling permits). We thank the Editor, Colin Murray-Wallace, and an anonymous reviewer for their suggestions.

## References

- Aksu, A.E., Hiscott, R.N., Yaşar, D., İşler, F.I., Marsh, S., 2002. Seismic stratigraphy of Late Quaternary deposits from the southwestern Black Sea shelf: evidence for noncatastrophic variations in sea-level during the last ~10,000 years. *Marine Geology* 190, 61–94.
- Bacescu, M.C., Müller, G.I., Gomoiu, M.-T., 1971. *Ecologie Marina*, vol. IV. Romanian Academy Press, Bucharest, 357 pp. (in Romanian).
- Bahr, A., Lamy, F., Arz, H.W., Major, C., Kwiciczen, O., Wefer, G., 2008. Abrupt changes of temperature and water chemistry in the late Pleistocene and early Holocene Black Sea. *Geochemistry, Geophysics, Geosystems* 9, Q01004, doi:10.1029/2007GC001683.
- Balabanov, I.P., 2007. Holocene sea-level changes of the Black Sea. In: Yanko-Hombach, V., Gilbert, A.S., Panin, N., Dolukhanov, P.M. (Eds.), *The Black Sea Flood Question: Changes in Coastline, Climate, and Human Settlement*. Springer, New York, pp. 603–631.
- Baltac, G., 1963. Fauna neoeuxina pleistocen superioara din depozitele Deltei Dunarii. *Hidrobiologia* 4, 253–260 (in Romanian).
- Baltac, G., 1964. Fauna de moluste corespuzatoare stadiului vechi al Marii Negre din depozitele Deltei Dunarii. *Hidrobiologia* 5, 253–260 (in Romanian).
- Bard, E., Hamelin, B., Fairbanks, R.G., Zinder, A., 1990. A calibration of the <sup>14</sup>C timescale over the past 30,000 years using mass spectrometric U–Th ages from Barbados corals. *Nature* 345, 405–410.
- Bard, E., Hamelin, B., Arnold, M., Montaggioni, L., Cabioch, G., Faure, G., Rougerie, F., 1996. Deglacial sea-level record from Tahiti corals and the timing of global meltwater discharge. *Nature* 382, 241–244.
- Chepaluga, A.L., 1984. Inland sea basins. In: Velichko, A.A. (Ed.), *Late Quaternary Environments of the Soviet Union*. University of Minnesota Press, Minneapolis, MN, pp. 229–246.
- Dimitrov, P.S., 1982. Radiocarbon datings of bottom sediments from the Bulgarian Black Sea Shelf. *Oceanology* 9, 45–53.
- Dodonov, A.E., Tchepalyga, A.L., Mihailescu, C.D., Zhou, L.P., Markova, A.K., Trubikhin, V.M., Simakova, A.N., Konikov, E.G., 2000. Last Interglacial records from central Asia to the northern Black Sea shoreline: stratigraphy and correlation. *Geologie en Mijnbouw* 79, 303–311.
- Eriş, K.K., Ryan, W.B.F., Çağatay, M.N., Sancar, U., Lericolais, G., Ménot, G., Bard, E., 2007. The timing and evolution of the post-glacial transgression across the Sea of Marmara shelf south of Istanbul. *Marine Geology* 243, 57–76.
- Eriş, K.K., Ryan, W.B.F., Çağatay, M.N., Sancar, U., Lericolais, G., Ménot, G., Bard, E., 2007. Reply to comment on “The timing and evolution of the post-glacial transgression across the Sea of Marmara shelf south of Istanbul” by Hiscott, et al., *Marine Geology* 248, 228–236. *Marine Geology*.
- Fairbanks, R.G., 1989. A 17,000-year glacio-eustatic sea level record: influence of glacial melting rates on the Younger Dryas event and deep-ocean circulation. *Nature* 342, 637–642.
- Flood, R.D., Hiscott, R.N., Aksu, A.E. Morphology and evolution of an anastomosed channel network where saline underflow enters the Black sea. *Sedimentology*, in press.
- Giosan, L., Mart, Y., McHugh, C.M.G., Vachtman, D., Çağatay, M.N., Eriş, K.K., Ryan, W.B.F., 2005. Megafloods in Marginal Basins: new Data from the Black Sea. *Eos, Transactions, American Geophysical Union* 86 (52), Fall Meet. Suppl., Abstract PP32A-03.
- Giosan, L., Donnelly, J.P., Constantinescu, S., Filip, F., Ovejanu, I., Vespremeanu-Stroie, A., Vespremeanu, E., Duller, G.A.T., 2006. Young Danube delta documents stable Black Sea level since the middle Holocene: morphodynamic, paleogeographic, and archaeological implications. *Geology* 34, 757–760.
- Giosan, L., 2007. 2007. In: Yanko-Hombach, V., Gilbert, A.S., Panin, N., Dolukhanov, P.M. (Eds.), *The Black Sea Flood Question: Changes in Coastline, Climate and Human Settlement*. Springer, Berlin, ISBN 978-1-4020-4774-9 971pp., 246 illus., *Quaternary Science Reviews* 26, 1897–1900.
- Göktaşan, E., Algan, O., Tur, H., Meriç, E., Türker, A., Şimşek, M., 2005. Delta formation at the southern entrance of Istanbul Strait (Marmara Sea, Turkey): a new interpretation based on high resolution seismic stratigraphy. *Geo-Marine Letters* 25, 370–377.
- Görür, N., Çağatay, M.N., Emre, O., Alpar, B., Sakiç, M., et al., 2001. Is the abrupt drowning of the Black Sea shelf at 7150 yr BP a myth? *Marine Geology* 176, 65–73.
- Grossu, A.V., Baltac, G., 1962. Limnocardiidele cuaternare in depozitele Deltei Dunarii. *Studii si Cercetari de Geologie* 11 (in Romanian).
- Hanebuth, T., Stattegger, K., Grootes, P.M., 2000. Rapid flooding of the Sunda Shelf: a Late-Glacial sea-level record. *Science* 288, 1033–1035.
- Hiscott, R.N., Aksu, A.E., Yaşar, D., Kaminski, M.A., Mudie, P.J., Kostylev, V., Macdonald, J.C., Lord, A.R., 2002. Deltas south of the Bosphorus record persistent Black Sea outflow to the Marmara Sea since ~10 ka. *Marine Geology* 190, 95–118.
- Hiscott, R.N., Aksu, A.E., Mudie, P.J., Marret, F., Abrajano, T., Kaminski, M.A., Evans, J., Çakiroğlu, A.I., Yaşar, D., 2007. A gradual drowning of the southwestern Black Sea shelf: evidence for a progressive rather than abrupt Holocene reconnection with the eastern Mediterranean Sea through the Marmara Sea Gateway. *Quaternary International* 167–168, 9–34.
- Hiscott, R.N., Aksu, A.E., Mudie, P.J., 2008. Comment on “The timing and evolution of the post-glacial transgression across the Sea of Marmara shelf south of Istanbul” by Eriş et al., *Marine Geology* 243, 57–76. *Marine Geology* 248, 228–236.
- Kwiciczen, O., Arz, H.W., Lamy, F., Wulf, S., Röhl, U., Haug, G.H., 2008. Reservoir ages of the glacial Black Sea. *Radiocarbon* 50, 99–118.
- Lambeck, K., Sivan, D., Purcell, A., 2007. Timing of the last Mediterranean Sea–Black Sea connection from isostatic models and regional sea-level data. In: Yanko-Hombach, V., Gilbert, A.S., Dolukhanov, P.M. (Eds.), *The Black Sea Flood Question*. Springer, pp. 797–808.
- Lericolais, et al., 2007a. A Black Sea lowstand at 8500 yr BP indicated by a relict coastal dune system at a depth of 90 m below sea level. In: Harff, J., Hay, W.W., Tetzlaff, D.M. (Eds.), *Coastline Changes: Interrelation of Climate and Geological Processes*. GSA Special Paper 426, pp. 117–188.
- Lericolais, et al., 2007b. Water-level fluctuations in the Black Sea since the Last Glacial Maximum. In: Yanko-Hombach, V., Gilbert, A.S., Panin, N., Dolukhanov, P.M. (Eds.), *The Black Sea Flood Question: Changes in Coastline, Climate, and Human Settlement*. Springer, New York, pp. 437–452.
- Lericolais, G., Minereau, A., Guichard, F., Morigi, C., Panin, N., 2007c. Black Sea level fluctuation since the LGM. *Quaternary International* 167–168, 235.
- Liteanu, E., Pricajan, A., Baltac, G., 1961. Transgresiunile cuaternare ale Mării Negre pe teritoriul Deltei Dunării. *Studii si Cercetari de Geologie* 6, 743–762 (in Romanian).
- Liteanu, E., Pricajan, A., 1963. Alcătuirea geologică a deltei Dunării. *Hidrobiologia* 4, 57–80 (in Romanian).
- Major, C.O., Goldstein, S.L., Ryan, W.B.F., Lericolais, G., Piotrowski, A.M., Hajdas, I., 2006. The co-evolution of Black Sea level and composition through the last deglaciation and its paleoclimatic significance. *Quaternary Science Reviews* 25, 2031–2047.
- Major, C.O., 2002. Non-eustatic controls on sea-level in semi-enclosed basins. Ph.D. thesis, Columbia University, New York, NY, 223 pp.
- Minereau, A., 2006. Ya a-t-il eu une transgression rapide en mer Noire au cours de l'Holocène? Master thesis, Université de Bordeaux 1, 49 p.
- Murray, J. Sir, 1900. On the deposits of the Black Sea. *Scottish Geographical Journal* 16, 673–702.
- Nevekkaya, L.A., 1965. Late Quaternary Bivalves of the Black Sea. Their Systematics and Ecology. *Nauka, Moscow*, 176 pp. (in Russian).
- Overeem, I., Kroonenberg, S.B., Veldkamp, A., Groenesteijn, K., Rusakov, G.V., Svitoch, A.A., 2003. Small-scale stratigraphy in a large ramp delta: recent and Holocene sedimentation in the Volga delta, Caspian Sea. *Sedimentary Geology* 159, 133–157.
- Panin, N., 1972. Histoire Quaternaire du Delta du Danube, Essai d'interpretation des facies des depots deltaïques. *Cercetari Marine* 4, 5–15.
- Panin, N., Pricajan, A., Baltac, G., 2007. Histoire Quaternaire du Danube Delta, Essai d'Interpretation des Faciès des Dépôts Deltaïques. Version in Extensio, Republiée d'Après Panin, 1972. *Geo-Eco-Marina* 13, 31–42.
- Pirazzoli, P.A., 1991. *World Atlas of Holocene Sea-Level Changes*. Elsevier, Amsterdam, 300 p.
- Popescu, I., Lericolais, G., Panin, N., Normand, A., Dinu, C., Le Drezen, E., 2004. The Danube submarine canyon (Black Sea): morphology and sedimentary processes. *Marine Geology* 206, 249–265.
- Reimer, P.J., et al., 2004. IntCal04 Terrestrial Radiocarbon Age Calibration, 0–26 cal kyr BP. *Radiocarbon* 46, 1029–1059.
- Romanescu, G., 1996. L'évolution hydrogeomorphologique du delta du Danube, etape pleistocene-holocene inferieur. *Zeitschrift fuer Geomorphologie. Supplementband* 106, 267–295.
- Ross, D.A., Degens, E.T., MacIvaine, J., 1970. Black Sea: recent sedimentary history. *Science* 170, 163–165.
- Ryan, W.B.F., Pitman III, W.C., 1999. *Noah's Flood: the New Scientific Discoveries about the Event that Changed History*. Simon and Schuster, New York, 319 p.
- Ryan, W.B.F., Pitman III, W.C., Major, C.O., Shimkus, K., Moskalenko, V., Jones, G., Dimitrov, P., Gorur, N., Sakinc, M., Yuce, H., 1997. An abrupt drowning of the Black Sea shelf. *Marine Geology* 138, 119–126.
- Ryan, W.B.F., Major, C.O., Lericolais, G., Goldstein, S.L., 2003. Catastrophic flooding of the Black Sea. *Annual Reviews of Earth and Planetary Sciences* 31, 525–554.

- Ryan, W.B.F., 2007. Status of the Black sea flood hypothesis. In: Yanko-Hombach, V., Gilbert, A.S., Panin, N., Dolukhanov, P.M. (Eds.), *The Black Sea Flood Question: Changes in Coastline, Climate and Human Settlement*. Springer, pp. 63–88.
- Siani, G., Paterne, M., Arnold, M., Bard, E., Metivier, B., Tisnerat, N., Bassinot, F., 2000. Radiocarbon reservoir ages in the Mediterranean Sea and Black Sea. *Radiocarbon* 42, 271–280.
- Siddall, M., Pratt, L.J., Helfrich, K.R., Giosan, L., 2004. Testing the physical oceanographic implications of the suggested sudden Black Sea infill 8400 years ago. *Paleoceanography* 19, PA1024.
- Turney, C.S.M., Brown, H., 2007. Catastrophic early Holocene sea level rise, human migration and the Neolithic transition in Europe. *Quaternary Science Reviews* 26, 2036–2041.
- Yanko-Hombach, V.V., 2007. Controversy over Noah's Flood in the Black Sea: geological and foraminiferal evidence from the shelf. In: Yanko-Hombach, V., Gilbert, A.S., Panin, N., Dolukhanov, P. (Eds.), *The Black Sea Flood Question: Changes in Coastline, Climate, and Human Settlement*. Springer, Dordrecht, The Netherlands, pp. 149–204.
- Yanko-Hombach, V., Gilbert, A.S., Panin, N., Dolukhanov, P.M. (Eds.), 2007. *The Black Sea Flood Question: Changes in Coastline, Climate, and Human Settlement*. Springer, New York, 975 p.
- Yokoyama, Y., Lambeck, K., De Deckker, P., Johnston, P., Fifield, L.K., 2000. Timing of the Last Glacial Maximum from observed sea-level minima. *Nature* 406, 713–716.